

Arts Monthly

March 2015 Edition

A Resource for Artsy Happenings in Whatcom County

allied@arts

OF WHATCOM COUNTY

Member Exhibitions

A new exhibition of original paintings by Pamela Heward is currently on display through June 2015 at The Pilates Studio of Bellingham, 907 Harris Avenue, Suite 201, in Fairhaven. The pastel paintings feature Bellingham Bay, Pacific Northwest and Ireland locales. For more information, contact Maria or Geoffrey Knight at The Pilates Studio of Bellingham, phone 360-527-8663, www.pilatesofbellingham.com, or Pamela Heward phone 360-305-7432, www.pamelaheawardfineart.com

Through the Lens, a photography exhibition featuring Dennis Walton and myself. Dennis is an amazing photographer - his "tribal portraits" are phenomenal and deeply personal. He'll also be showing some of his brand new Namibian landscapes. John D'Onofrio will also be displaying brand new photographic work from Alaska and the Olympic Coast.

Classes and Workshops



Create Your Own Wire-Sculpted Jewelry

Instructor Carol Sheppard will provide the necessary tools and materials to create 2 projects per student per class, either 1 pair of earrings and 1 pendant or 2 pendants (varies by class). All projects are created in Sterling Silver. *14k YGF wire is available at an additional

Allied Arts Annual Member's Show

March 6th - 28th, 2015

Opening Reception: Friday, March 6th, 6pm to 9pm

Gallery Hours: Monday thru Friday 10am to 5pm, Saturday 12 to 5pm

Allied Arts of Whatcom County will host its 2015 Members Show in March. Participation is open to all current Allied Arts Members at any level of membership.

This show will feature work from nearly 100 Allied Arts members, including professional artists, students, and new or emerging artists. Works presented will range from traditional paintings to photography to contemporary sculptures and everything in between.

Approximately 30 pieces from this show will be chosen to be exhibited at the Hotel Bellwether's hallway and Lighthouse Bar & Grill during the month of April.

For more information visit www.alliedarts.org or contact: Katy Tolles, Artist Services Coordinator at 676-8548 x5 or katy@alliedarts.org.

Allied Arts

Annual Member's Show

March 6th - 28th, 2015

www.alliedarts.org



charge. Make your own beautiful jewelry! 3-hour classes include hands-on creative instruction and all materials plus use of all necessary tools for workshop

\$39. per class for Beginning plus \$5 Materials fee

\$45. per class for Intermediate plus \$10 Materials fee. Call now for Class Schedule or [check Website](#) (770)366-8186

Ragfinery Workshops

Visit www.ragfinery.com for more information or to register.

Knitting for Beginners with Elga La Pine - \$5

Thurs. March 5th, 2-3pm
Learn to cast on, knit stitch, pearl stitch and how to bind off. Start a simple scarf, dish cloth or cell phone cover.

No-Sew Braided Rugs with Kirsten Wert - FREE!

Fri. March 6th, 3-4pm
Come learn how to craft a beautiful no sew braided rug. This four strand technique eliminates the need for sewing braids together and results in a sturdy rug able to withstand the modern washer and dryer. These rugs are a great way to keep worn, torn, ugly or stained fabrics out of the landfill.

March Lion Hand Puppets with Libby Chenault - \$25

Sat. March 7th, 1-3pm
March will come in like a lion with this fun afternoon of crafting. In this workshop you will practice (or learn) basic embroidery and hand sewing techniques while making a colorful felt hand puppet. This project is a variation on the whimsical stuffed animals and pins that instructor Libby Chenault makes for her business moth and squirrel. She will show you how she designs faces, mixes colors and tips for making more critters with your own upcycled materials.

Crocheting Circle with Robin Huff - Tues. March 10th, 2-4pm
Bring your crocheting project or questions to this class and get tips from Robin Huff. Beginners are welcome as well!

Beginning Sewing with Molly Chambers - \$40

Wed, Thurs March 11th, 12th,



alliedarts
OF WHATCOM COUNTY

Studio Sweep 2015

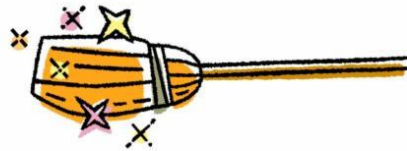
When: March 20th and 21st 9:00 am to 4:00 pm

Where: 1415 Cornwall Ave, Bellingham WA.

(The Old Dakota Art Store)

What Treasures you may find

Paint brushes, canvas, pottery supplies, easels, drawing materials, textiles, beads, tools, studio seconds, prints, fine art pieces, musical instruments, costumes... and the list goes on.



Sweep your studio and rent a table to sell your own things or donate them for Allied Arts to sell. Need to stock up on supplies? This is a great chance to get gently used art supplies and equipment at a screamin' deal! Click the broom above for more information.

Call to Artists: The First Annual International Art Competition for Artists with Disabilities

Theme: Yes, I can

Deadline: September, 30, 2015

We are happy to announce that several agencies in Whatcom County, Washington, will be uniting to promote disability awareness during the month of October 2015. Artwork created by both local artists and international artists with disabilities will be on display in the City of Bellingham, along with their biography and picture, if a picture is submitted. Artists will have the option of either donating a piece of artwork to the committee, or allowing the committee to exhibit the artwork. Entry forms can be picked up at Allied Arts of Whatcom County, 1418 Cornwall Ave, Downtown Bellingham.

Send entries to: SISU Children's Fund, 609 Briar Road, Bellingham, WA 98225
Questions? Call (360) 671-8766 or email sisuchildrensfund@gmail.com.

Allied Arts Exhibits Around Town:

Hotel Bellwether

1 Bellwether Way, Bellingham

Through March: Works by local painters Beth Anderson and Lois Dahl.

Downtown Visitor's Center
1306 Commercial St, Bellingham

Through March:

See works by local watercolorist James Williamson.



Giuseppe's Al Porto: Italian Restaurant

21 Bellwether Way, Bellingham

Through February, 2015: Selected still life and landscape paintings by artist Eileen Reardanz.

from 6-8pm

Spend two nights (March 11th & 12th from 6pm-8:00pm) learning the basics of sewing with Molly Chambers. Get comfortable sewing a straight line and leave with a tote bag you made yourself!

Upcoming BMAG workshops

[Click here](#) to learn more about workshops at Bellingham Metal Arts Guild

BMAG Board Meeting: March 12th, Thursday, 5:30- 7:00PM.
BMAG Member's Meeting: March 12th, Thursday, gather at 7:00 pm.

Casting Lab: March 10th & 11th, Tuesday & Wednesday evenings, 6:00pm - 10:00pm.
Instructor: Frank Goss.
Prerequisites online. Price: \$75 + \$15 materials fee at market price.

Lost Wax Casting Workshop: March 13, 14 & 15th, 3-days, Fri., Sat. & Sun., 10:00am-3:00pm. See prerequisites for this workshop.
Instructor: Frank Goss. \$375 + \$25 material fee.

Salt Water Etching Workshop: March 22nd, Sunday, 10:00am - 3:30pm.
Adults please, no experience needed. Instructor: Ryan Albachten. \$80.00 plus \$20.00 kit fee.

Please check our website weekly for these & other upcoming courses that will be offered soon: Beginning Earwires & Findings, Beaded Chain Linked Bracelet, Design a Beaded Necklace, Children's Classes, Precious Metal Clay, Fancy Stone Setting Workshop & more!

It's time!

The Hive is opening on March 6th.

208 Bay Street #102, Downtown Bellingham

We've workshoped the idea. We've raised the funds. We've set up the space. And now we're finally opening the door.

Two Great Artist Opportunities from the Ferndale Arts Commission

Free Verse Photo Project

Deadline: March 17th, 5pm

Take a photo of words or lines from a favorite poem presented in a non-traditional way. For examples and inspiration, google The Academy of American Poets Free Verse Project. Open to all ages. Submitted photographs must be a minimum of 8" x 10" and must be mounted. Prizes will be awarded to three selected entries.

Entries will be displayed in participating Ferndale businesses throughout April, National Poetry Month. Entry forms are available online at [The Ferndale Arts Commission website](#)

Entries will be accepted in person or by mail at: Ferndale City Hall, 2095 Main Street, Ferndale, WA 98248

Sorry, online entries cannot be accepted

"I Eat My Peas with Honey", anonymous, as visualized by Robin A. Peters
Source: *The Random House Book of Poetry of Children (1983)*



Questions? Contact Marla Morrow at 360-384-0050 or ferndalearts@cityofferndale.org

Call to Artists for the fourth annual Art in the Park

Deadline to apply is June 17, 2015

Event Dates: Saturday, September 12th, 10am - 4pm and Sunday, the 13th, 12pm - 4pm at Pioneer Pavilion Community Center

Art in the Park will feature visual and performing artists, live music, kids' art activities and food. This event is free and open to the public.

Artists will show and sell their artwork inside the Pioneer Pavilion Community Center in Ferndale, next to Pioneer Park. This call to artists is open to all artists that reside in Washington State and includes all types of art media. [Click here for the application form and information.](#)



The Ferndale Arts Commission was established in 2008 and is committed to providing art experiences for our community and opportunities for both emerging and established artists.

Contact: Ellen McAnany- 360-410-0918 ferndalearts@cityofferndale.org

You can catch up on our current news and updates below, and we hope you will join us for an open house next Friday, March 6th. We can't wait to show you what we've been up to.

And past that? We'll figure it out together. Visit www.make-do-learn.org for more!

Sculpture Survey Under Way

Sculpture Northwest is currently conducting a survey of all outdoor sculpture located in the City of Bellingham. The goal is to make the four northwestern counties in Washington State, (San Juan, Skagit, Island and Whatcom,) an international tourist destination for individuals seeking to view the array of outdoor sculpture in this region. To achieve that goal Sculpture Northwest is seeking volunteers to help document every outdoor sculpture in those four counties.

Sculpture Northwest already has documentation on sculptures located on the campus of Western Washington University and has documentation on the outdoor sculptures owned by the City of Bellingham. Now they seek information on the outdoor art owned by the Port of Bellingham, Whatcom Community College, Bellingham Technical Institute, Bellingham School District, Saint Joseph's Hospital, Whatcom County, the State of Washington Arts Commission, private businesses and individuals.

While the focus is on Bellingham, Sculpture Northwest is currently seeking volunteers willing to help obtain information on outdoor sculpture located in Ferndale, Blaine, Lynden, the Lummi Reservation and other parts of Whatcom County. In addition to looking for sculptures in public view in this area Sculpture Northwest is also trying to locate all sculptors who live here.

Individuals willing to volunteer assistance in this project should Email info@sculpturenorthwest.org or phone George Drake at 360-734-9757.

Focus on Collections Care Workshop Series

Seattle, Washington - March 25 to 27, 2015

Hosted by University of Washington

Registration deadline: Tuesday March 17, 2015

Join us at the Watertown Hotel, Seattle, for workshops on the following topics:

- Care of Collections: Metal Objects
- Disaster Recovery for Wet Collections-First 24-48 Hours
- Care of Collections: Paper
- Preservation: Policies, Plans & Procedures
- Environmental Monitoring: Gathering, Understanding and Using your Data
- Condition Reporting for Collections Managers

For more information and to register, please visit www.focusoncollectionscare.org



Joshua Roman Recital

April 24, 2015 at 7:30 PM

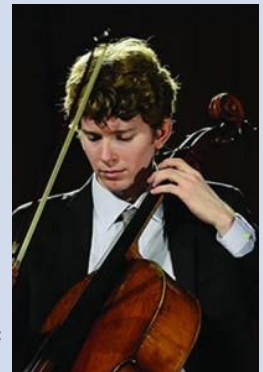
Western Washington University Performing Arts Center

Extraordinary young cellist Joshua Roman will return to Bellingham for a special Festival of Music recital performance on April 24. "A cellist of extraordinary technical and musical gifts" (San Francisco Chronicle), Joshua Roman has earned national renown for performing a wide-ranging repertoire with an absolute commitment to communicating the essence of the music at its most organic level.

He is also recognized as an accomplished composer, curator, and programmer, particularly in his work as Artistic Director of Seattle Town Hall's Town Music series. Roman was named a 2011 TED Fellow, joining a select group of next generation innovators of unusual accomplishments who show potential to positively affect the world.

Before embarking on a solo career, Roman spent two seasons as principal cellist of the Seattle Symphony, a position he won in 2006 at the age of 22. Since that time he has appeared as a soloist with the San Francisco Symphony, the Seattle Symphony, the Los Angeles Philharmonic, the BBC Scottish Symphony, and many other symphony orchestras.

Visit bellinghamfestival.org for more information



Like what you see?

Make sure you keep seeing great information like this, art exhibits, festivals, arts education in schools and so much more by making a donation to Allied Arts of Whatcom County. Your donation helps support programs that benefit hundreds of artists and thousands of students each year.

[Click here to donate now!](#)

Writer Island and two residency opportunities open now!

Spend three days at the cusp of spring, and enjoy an infusion of new craft techniques from the hilarious and talented poet, essayist, and self-described Buddhist Boy (from his memoir, *Talk Thai: The Adventures of Buddhist Boy*) Ira Sukrungruang. The workshop is open to all genres and takes place the weekend of February 27 to March 1, 2015 on beautiful Orcas Island.

The Artsmith residency program has expanded in two exciting ways. First, the annual, one-week residency on Orcas Island will now be offered for up to four weeks for artists, writers, naturalists, and scholars to spend in the creation of new works. Second, in December of 2015, Artsmith will lead a 3-night cultural intensive residency for culture and/or travel writers to be immersed in the rich history of the Spanish colonial city of Laredo, Texas.

Apply for the December 2015 Culture & Travel Writer Residency or the January 2016 Artsmith Artist Residency here: <http://orcasartsmith.org/residency.html>

Don't have enough nickels for a writing retreat right now? Apply for the Doug and Ann Johnson Scholarship by February 21. Learn more <http://orcasartsmith.org/workshops.html>.

iDiOM Theater and Stone Town Theatre Works proudly present
THE BIRTHDAY PARTY

by Harold Pinter

In a rundown seaside boarding house, ex-piano player Stanley Webber is living quietly off the map. One day, two sinister gentlemen arrive and take a room. A seemingly innocent birthday party in Stanley's honor heads off the rails and into uncharted, nightmarish territory.

An early work by the influential British playwright, *The Birthday Party* showcases Pinter's characteristic absurdist dialogue, exploring themes of identity, societal conformity, the unreliability of language and memory, and the individual search for security in a world filled with unease, fear, and lack of understanding between people.

The *Birthday Party* runs March 13-29 at 1418 Cornwall Ave, Bellingham, WA 98225

Opening Weekend Fri-Sun Mar 13-15, thereafter Thu-Sun Mar 19-22 & Mar 26-29

Opening Night, Friday, March 13th, is a FREE iDiOM Theater Public Performance Door at 7:00pm, Show at 7:30pm

Tickets are \$12 advance, \$15 at door, available at idiomtheater.com.



Painted Diapason:

A Spectrum of Abstract Works
From Four Artists

Kay D. Little

Tyree Callahan

Yvette Neumann

Alan Weydert

Opening First Friday Art Walk
March 6th, 6pm

Dakota Art Gallery ♦ 1324 Cornwall Avenue ♦ Bellingham, Washington ♦ (360) 676-8918



HARVEST: The Bounty of Washington

Deadline for submissions: Friday, March 27, 2015

Each year, thousands of people from around the world attend events at the Washington State Convention Center, providing opportunities to introduce the abundance of the farmed and harvested riches of our state to many new markets.

The Convention Center is pleased to announce a Call for Artists for an upcoming photographic exhibition showcasing the bounty of the Washington State harvest and all the people who make it exceptional. This exhibition will celebrate both the creativity of our state's photographers and the diverse communities and people that provide so much from our 39 counties.

[A prospectus and application form are available here.](#)

Need more information?

Please call Diana Cross, Exhibition Coordinator, at 206-694-5182. M-F 8am-4pm

Vision Statement:

Allied Arts of Whatcom County is a nonprofit 501(c)3 corporation whose vision is to enliven and promote the artistic identity within our community and make our region an arts destination and creative, vibrant place to live.

Allied Arts Gallery & Office

1418 Cornwall Avenue

Mailing Address: PO Box 2584

Bellingham, WA 98227

alliedarts@alliedarts.org

360.676.8548

Gallery, AARTS & Office hours are

Mon - Fri: 10am - 5pm, Sat 12 - 5pm

Board of Directors

President ● Alicia Dauber

Vice President ● Kristin Slone

Treasurer ● John Sands

Board Members ● Barbara Vz Howard & Sheri Clark

Member at Large ● Honore Kirk

The Board of Directors meet the third Tuesday of every month at the Allied Arts Gallery: 5:30 - 7pm. All members and friends interested in the arts are encouraged to attend.

Staff

Executive Director: Kelly Hart

Artist Services Coordinator: Katy Tolles

Bookkeeper: Judy Taylor

And countless volunteers and interns

Want your announcement in our newsletter?

Please submit items no later than the 15th of the month to Katy Borden at katy@alliedarts.org

[Forward this email](#)

This email was sent to info@alliedarts.org by info@alliedarts.org | [Update Profile/Email Address](#) | Rapid removal with [SafeUnsubscribe™](#) | [Privacy Policy](#).



Allied Arts of Whatcom County | 1418 Cornwall Ave | Bellingham | WA | 98225