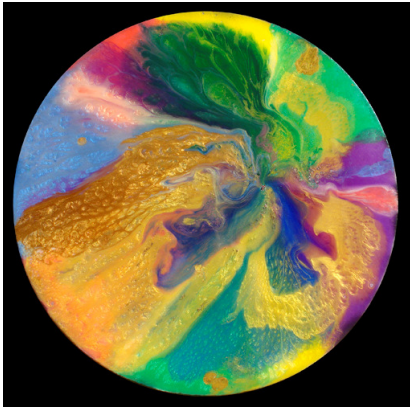


alliedarts

OF WHATCOM COUNTY



Gum Wrapper
resin on canvas, 23" dia.



Sepiphyte
resin on canvas, 30" x 30"



Lava Flow
resin on canvas, 23" dia.

Steve Satushek

As a sensory receptor for the universe, I open myself to the great mysteries and create my version of a visual passion for others to enjoy. Floods and storms, faraway galaxies, precious stones and sea creatures are my inspiration. The forces of creation and destruction, from the miniscule to the cosmic, are just waiting for the human mind to interpret during our brief existence on this earthly plane. I am drawn to the sensuous and healing qualities of color and I always look for new ways to connect the outer and inner realms.

Infusing pigments, oxides, and minerals into clear liquid polymer resins and allowing gravity to do its work, colors and textures flow and fuse in unique formations, revealing an iridescent depth that must be viewed close-up to be appreciated. I use canvas, cement, metal, and sheets of Sintra (PVC) as a base for the panels.