

Visit our website at  
[www.alliedarts.org](http://www.alliedarts.org)

**MISSION**

Allied Arts of Whatcom County is a nonprofit 501(c)3 corporation whose mission is to sustain and enrich our community through the arts.

**Allied Arts Gallery/Office**  
1418 Cornwall Avenue  
Mailing Address  
PO Box 2584  
Bellingham, WA 98227  
[alliedarts@alliedarts.org](mailto:alliedarts@alliedarts.org)  
360.676.8548

Gallery & Office hours are  
Monday - Friday  
10am - 5pm, Saturday 12 - 5pm

**Board of Directors**

**President** • Gabriel Miles  
**Vice President** • Kristin Slone  
**Treasurer** • Paul Hughes  
**Secretary** • Charlotte Guyette  
**Board Members** • Russell Hansen, Alicia Dauber and Phil Hanson

The Board of Directors meet the third Tuesday of every month at the Allied Arts Gallery: 1418 Cornwall Ave. 5:30 - 7pm.

The Board of Directors sets the policy for the organization and welcomes your input. All members and friends interested in the arts are encouraged to attend.

**Staff**

Executive Director  
[Kelly Hart](#)  
Education Project Manager  
[Chris Brewer](#)  
Artist Services Coordinator  
[Katy Borden](#)  
Bookkeeper  
[Judy Taylor](#)  
Opportunity Council Participants  
[Kamillie Concepcion](#)  
Western Work Study Student  
[Mackenzie Gregg](#)  
Genie Ankoudinova  
Whatcom Work Study Student  
[Alleigh Martorano](#)

**2011 Juried Artist Series: Delicate Strength**  
June 3rd – 25th, 2011

Gallery Hours: Mon. thru Fri. 10am to 5pm, Sat. 12 to 5pm

The Allied Arts 2011 Juried Artist series continues with Delicate Strength, featuring the work of Yvette Neumann and Enid Wilson. Delicate Strength is a show featuring the work of two women painters who both create abstract works which utilize soft colors and construct compositions that command the room.



Enid Wilson



Yvette Neumann

In conjunction with this show, Allied Arts' Inside the Box Series will feature work from Phil and Patti Rose. Their jewelry uses semi-precious stones, gold, and silver to create beautiful, wearable works of art.

For more information visit [www.alliedarts.org](http://www.alliedarts.org)



Phil & Patti Rose

**DIRECTOR'S**

**Update on Washington State Legislative Issues Pertaining to the Arts from the Washington State Arts Alliance / Foundation**

2011 Washington State Legislative special session ended Thursday night.

- The operating budget (2ESHB 1087) passed with approximately \$1.1 million dollars per year in state funding for the Washington State Arts Commission and retains it as an independent agency.
- In the capital budget there were no changes to the Arts Commission' public art program (ESHB 1497).
- ESSB 5834 was passed late Wednesday to continue funding for 4Culture from the existing hotel-motel tax; in the interim the bill provides the authority they need to spend down an endowment to provide a bridge until the stadium bonds are paid off.
- The capital bond bill (ESHB 2020) includes \$2,462,000 for the Department of Commerce's Building for the Arts program; the proposed project list was approx. \$7 million. The Washington State Historical Societies' Washington Heritage Grants program is funded at \$1,168,000; the proposed project list was approx. \$10 million.

During the next three weeks, The Governor will review and sign or veto a bill.

Thanks to all of you for your strong advocacy efforts during this very busy Legislative Session.



Executive Director: Kelly Hart  
Photo by Tore Oftness

CORNER



## ART WALK 2011

Hundreds of families and art-lovers turned out to enjoy children's art during our May 6th event, despite rainy weather. 500 people viewed the entertainment and art at the Lightcatcher Building of the Whatcom Museum, our Gallery was packed and our activity sites had a constant stream of participants.

Many more people have stopped to appreciate art in business windows during the past 2 weeks.



A family enjoys children's art at Urchins at the May 6th opening event.

A raincoat-clad child explores a puppet made by a Northern Heights 4th grader at our Puppet activity area.



### Thank You's!

Our sincere thanks go out to the many people who helped to make our 11th Annual Children's Art Walk a great success!

### Sponsors

Community Food Co-op  
Johnson's Flowers  
Little Tiger Toys  
Whidbey Island Bank

### Advertisers

John Stewart Architects  
Quist Violins  
Urchins  
Whatcom Family YMCA

### Community Partners

Bellingham Parks and Recreation  
Downtown B'ham Partnership  
Whatcom Museum

### Schools and Parents

Bravol to all of the parents and teachers who coordinated their schools art displays and brightened our downtown businesses with children's art!

### Businesses

We couldn't do it without our businesses who provided wall and window space for our children's displays!

## AAEP Teaching Artists Summer Art Offerings and Adventures!



Here are creative arts workshops, camps and summer activities provided by our Teaching Artists this summer. You'll want to catch up with these!

**\*The Neighborhood Playhouse Performances:** Theatre for children and families  
**Walking the Tightrope:** June 16<sup>th</sup> at 7pm, June 18<sup>th</sup> at 2pm, and June 19<sup>th</sup> at 5 Tickets available at Piper Music on Meridian and both Community Co-ops.

**Visiting Granddad:** A family play presented at the Firehouse Performance Center June 17<sup>th</sup> at 7pm, June 18<sup>th</sup> at 3:30pm, June 19<sup>th</sup> at 2 pm. Tickets: \$5

**\*The Neighborhood Playhouse Summer Camps:** 360-756-5066  
**Camp Comedy 3D!** Grades 6-12, June 27-July 1, Bham Theatre Guild  
**Theater Under the Sea,** Grades K-2, June 27-July 1, Bham Theatre Guild  
**Musical Theatre Production Camp,** Grades 3-5, August 1-5, Bham Theatre Guild

**\*Thor Myhre:** 360-676-1042  
**"Junk has Soul" Sculpture Workshop** at the Anacortes Arts Festival, Aug. 6th and 7th and also at Lake Oswego's Art Fest on Kids Day June 24th.

**\*Pace Atelier Art Studio Summer Camps,** Jacquie Bresadola, 360-383-1335  
3815 Bakerview Spur Rd #2, Bellingham  
**Grades K-5,** camps each week from July 11 to August 5  
**Teen Art Scene,** Grades 7-12, June 28-July 1  
**Elements of the Earth** Bronze, stone, clay, photography, ages 9-teen, Aug 15-19

**\*Janet Oakley: Book talk** on new release, *Tree Soldier*, Village Books 7pm July 6.  
**Pioneer Camp** ages 5+, Skagit Valley Children's Museum: August 15, 16, 360-757-8888

**\* Rachel Narhi:** rachelnarhi@gmail.com  
**Twirling Tots Dance Camp,** 3-4 yrs, 2:30-3:30, July 18-21, Firehouse PA Center  
**Just Ballet,** 8-12 yrs, July 25-29, 1:30-3:30, Firehouse PA Center  
**Dancing under the Tree,** drop-in creative dance \$5, Firehouse PA Center  
2-4 yrs, Wednesdays July 6-Aug 10 (not Aug 3), 4-4:45pm  
5-9 yrs, Tuesdays July 5-Aug 9 (not Aug 2), 4-5pm  
**Beginner Poi Spinning** (circus dance), teens and adults, Sundays 7-8pm, July 10-th-28th, 8 one-hour classes

**\* Gail Weiss:** Summer Professional Development for Educators at the Whatcom Museum, Lightcatcher Building, register at www.nwescd.org, info at 360-299-4044  
**Turning Disadvantage into Advantage with the Arts:** June 27-30, 3 SPU cdt/30 ck hrs  
**Art and Science meet Fibonacci:** August 9-10, 10 clock hours  
**Art and Math Infusion:** August 11-12, 10 clock hours

**\* Chris Brewer:** 336-207-7505, chris@musicandlearning.com  
**Circles of In-sight, Drawn Mandala and MARI Assessment:** Jun 14-15 Level I, Seattle

## 2011- 2012 Children's Art Cards Selected

Each year at the Children's Art Walk we select art to feature in our Arts Education Art Card series. Sales from these cards support arts in our county schools. With 3000 pieces of delightful art to choose from, this is not an easy task. This year we received help making the selections from members of our Bellingham Arts Commission, our Board of Directors, local artists and the Bellingham School District Curriculum Director. Here is a preview of 2 of the 12 new art cards. Available for sale online and in our gallery this summer!

The art (right) by Kennedy from Happy Valley Elementary (grade 5) is called *Your own way of looking at the moon*. Says Kennedy about his work, "Everyone has their own way of looking at the moon, even dogs!" The art class was taught by art teacher LaVonne Chue.



(Left) AAEP Teaching Artist Mary Davis taught a Picasso lesson to Mrs. Lorson-Howell's 2nd grade class at Alderwood Elementary. The lesson was the inspiration for this endearing self-portrait which artist Sarah titled, Heart Face.



## Shipwreck Canvas

Shipwreck Canvas is just starting up in Bellingham. The company takes wrecked or discarded sails and turns them into artist canvases. It all started when founder Mark Katsikapes's sailboat was destroyed in a windstorm. After salvaging everything he could from the boat, he took the shredded sails, cut them up and stretched them over frames making painter's canvases.

Sail fabric is a dacron polyester, which has a tighter weave than typical duck canvas, so the canvas is very smooth. The canvas works well with oils or acrylics and the smooth surface is especially nice for fine pencil work and watercolor. The canvases are made from 99% repurposed materials. The only part of the canvas that is not recycled is the white gesso primer.

Call or email Mark if you are interested in a canvas or if you want to learn more 360-301-9267 [shipwreckcanvas@gmail.com](mailto:shipwreckcanvas@gmail.com)

## Volunteers Needed for Summer Events!

Allied Arts is primarily supported by volunteer efforts. Get a great sense of community and the arts while volunteering at one of our Summer events. Duties would include hanging posters/promotion, setting up and taking down equipment, assisting in organizing vendors/artists, and answering questions from the public.

For more information or to sign up as an event volunteer please contact executive director, Kelly Hart at: [kelly@alliedarts.org](mailto:kelly@alliedarts.org), or call 360-676-8548, x4.



Volunteers Whitney and Hannah having a great time at Chalk ArtFest last year!

Photo by Tore Oftness



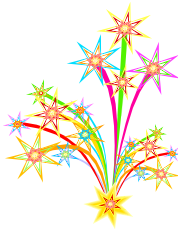
## Register now for the 19th Annual Chalk ArtFest

Thanks to our wonderful partners over at Fifth on Sixth, Chalk ArtFest **will** be happening this year on August 6th! This year it will be held up on Champion, Commercial, Bay and Magnolia streets. You still get the high quality artist's chalk with the purchase of your square and we will still be judging the art and giving away fabulous prizes to the winners!



**Registration is open now!** Register in the gallery at 1418 Cornwall Ave or online at [www.alliedarts.org/store](http://www.alliedarts.org/store)

## Call for Images: 4th of July at Zuanich Point Park



Bellingham/Whatcom County Tourism and Allied Arts are looking for 13 to 15 framed photographs of our scenic region to display in the **Squalicum Boathouse at Zuanich Point Park** during the 4th of July Festival. An emphasis will be put on selecting images that depict people participating in activities in our community as well as images of our wonderful landscape. Please email Katy Borden, Artist Services to [katy@alliedarts.org](mailto:katy@alliedarts.org) with up to four digital images of entries and include information for each piece (title, dimensions, medium and price) by **June 15th**. Accepted entries will be **notified by June 20**. Artwork must be available for **display June 30-July 5, 2011**.

## Call to Artists, Crafters and for Locally Made Products

Looking for a retail outlet downtown to sell your Art, Crafts and Local products? Artisans ( a new art gallery and market) is seeking Art, Crafts, Furniture designers, Pet products. "We have a great location, and a beautiful, large storefront, perfect for selling your locally-made products." **Location : 1215 Cornwall Street \* (Next to India Grill)** Interested, please contact Rick @ [360.920.0452](tel:360.920.0452) / [rick\\_alcantara@q.com](mailto:rick_alcantara@q.com) for an appointment.

### Flexible spaces for lease

Sections of "Display Case" (3'x3'x3') each size, Display spaces up to 8' x 8' (Various space sizes available), Rooms available for Art, Clothing or Work studio? (12 1/2'L x 9 1/2'W) each, Loft (Class teaching space?) 25'x25', Art Wall (31'L x10'W) and Back room (12'x14')

## Anacortes Arts Festival - Gorilla/Guerilla Street Art

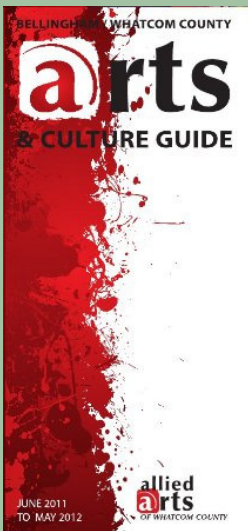
As part of their 50th anniversary celebration, the Anacortes Arts Festival is excited to introduce a new Gorilla/Guerrilla Street Art Area. This is an open call to artists who wish to perform or demonstrate their art in an informal, public venue, using the street environment as a backdrop. This free-expression area will be located in the 'Working Artist' area at the north end of Commercial Ave, in Anacortes, between the Festival food area and the Port building, on **Saturday and Sunday, August 6 & 7 from 10 - 4**.

There will be a Guerrilla Coordinator available from 8 am to 5 pm each day. Artist may demonstrate or perform for any amount of time between 10:00 am and 4:00 pm. Space will be given on a first come basis on the morning of each Festival day between the hours of 8:00 to 9:30 am. **Artists may also register ahead with the Coordinator, Karla Locke, email [kklocke1@mac.com](mailto:kklocke1@mac.com) or call 360-588-6968, to ensure space.**

## Washington State Invests in Creative Vitality

The Washington State Arts Commission (WSAC) and WESTAF (Western States Arts Federation) are teaming up with local groups across Washington to explore how the [Creative Vitality Index](#) (CVI) can inform and advance local efforts to define, support, and advance the creative economy in communities across the state.

Five groups throughout Washington have been selected through a competitive application process to pilot these local efforts. Grantees include **Bellingham (led by Allied Arts of Whatcom County)**, Georgetown (led by United Artist of Georgetown), Palouse (led by Pullman Arts Commission), Tacoma (led by Tacoma Arts Commission), and Thurston County (led by Olympia-Lacey-Tumwater Visitor and Convention Bureau).



### Now Available... Whatcom County Arts & Culture Guide!

A free map of the best open studios, art galleries, museums and performance venues in our area. Come pick up your copy of at the Allied Arts Gallery and various other locations around Whatcom County!  
Visit [www.alliedarts.org/map](http://www.alliedarts.org/map) for more information!

### You're Invited to the Washington State Arts Alliance Foundation's 1st Annual Benefit Auction "Unmasked Masquerade"

Wednesday, June 15  
7:00pm  
Teatro ZinZanni  
222 Mercer Street, Seattle, WA

Join us for an evening of lively entertainment, wine, hors d'oeuvres and amazing silent and live auctions. We encourage you to RSVP and purchase tickets in advance at [wsartsalliance.com](http://wsartsalliance.com) or 206.448.1909

We hope you and your friends will attend our very first benefit event to help sustain the important advocacy work that the Washington State Arts Alliance Foundation provides our arts community!



## AARTS Grand opening July 1st!

Scheduled to open in June 2011, Allied Arts of Whatcom County is in the final stages of creating an Art Supply Thrift Store, which will be located in the back of our current downtown gallery at 1418 Cornwall.



The goal of the thrift store is to take objects that are seen as un-useful, remove them from the waste-stream, and redefine their value as art supplies.

For more information: [www.alliedarts.org/aarts](http://www.alliedarts.org/aarts)

To make the store possible we will rely on the community for donations to stock our store. If you have supplies that you want to donate and/or questions about what we will accept, please contact us at [AARTS@alliedarts.org](mailto:AARTS@alliedarts.org) to arrange for us to pick them up, or for you to drop them off on Monday afternoons beginning June 15th!



### June 2011 Creative Spaces Premiers during Downtown Art Walk: Friday, June 3rd 6PM - 10PM

#### June Artists and Locations

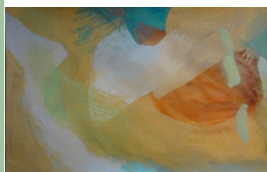
- Francie Allen** - 1320 Cornwall Avenue (JC Penney Building)
- Mira Kamada** - 1321 Cornwall Avenue (Barbo Furniture)
- Francie Gass** - 1323 Cornwall Avenue
- Candace Buethorn** - 1411 Cornwall Avenue

**What is Creative Spaces?** Allied Arts of Whatcom County, in partnership with the Downtown Bellingham Partnership and the City of Bellingham, is launching Creative Spaces, a juried show of temporary art exhibits and installations that will enliven the darkened windows of vacated facilities along Cornwall Avenue with art from the community and create an attraction along this primary downtown corridor. This project is part of an upcoming effort by the City of Bellingham to update the City Center Master Plan, the guiding document for downtown revitalization.

For more information please visit [www.alliedarts.org](http://www.alliedarts.org)

### Points of View - Kat Schneider Studio|Gallery

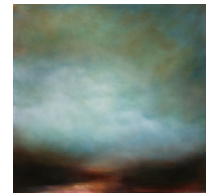
Whether it's mythology, poetry or the visual surroundings of the Pacific Northwest that inspire these three artists, their paintings offer a variety of viewpoints at this new exhibit opening June 3rd at Kat Schneider Studio | Gallery. POINTS OF VIEW will feature the artwork of Katherine Schneider, David Ridgway and Sharon Kingston. An opening artists' reception June 3rd during downtown artwalk at 301 W Holly Street in the Bay Street Village Building. Gallery hours Thur-Sat, 1-5 pm and by appointment at other times 360- 510-7241.



Kat  
Schneider



David  
Ridgway



Sharon  
Kingston



Zen Garden at Big Rock  
Sculpture Garden, Bellingham, WA

*The Flow Project, Dr. George Drake & Allied Arts present*

## GEORG SCHMERHOLZ

Sculpture & Consciousness, a Spiritual Perspective on Form

*June 17th, 2011, at 7:30PM*

*Allied Arts: 1418 Cornwall Avenue, Downtown Bellingham*

*Join us at Allied Arts for a presentation by world-renowned sculptor Georg Schmerholz as he shares his insights and experiences of sculpting from the last 25 years.*

*Donations greatly appreciated.*